

# Breeding Program Update

SpudPro Committee Meeting

October 30, 2019

W13A11229-1rus  
(A01325-1 x A06131-19)

Dual Purpose



2018 Hancock

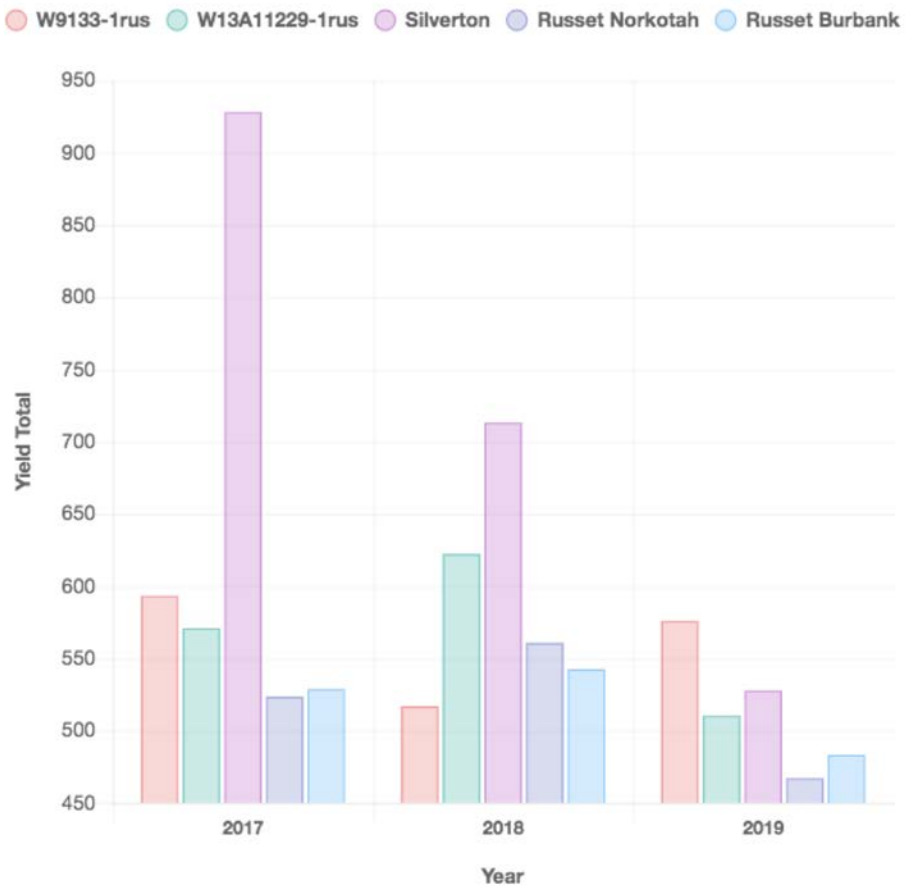


2019 Rhinelander

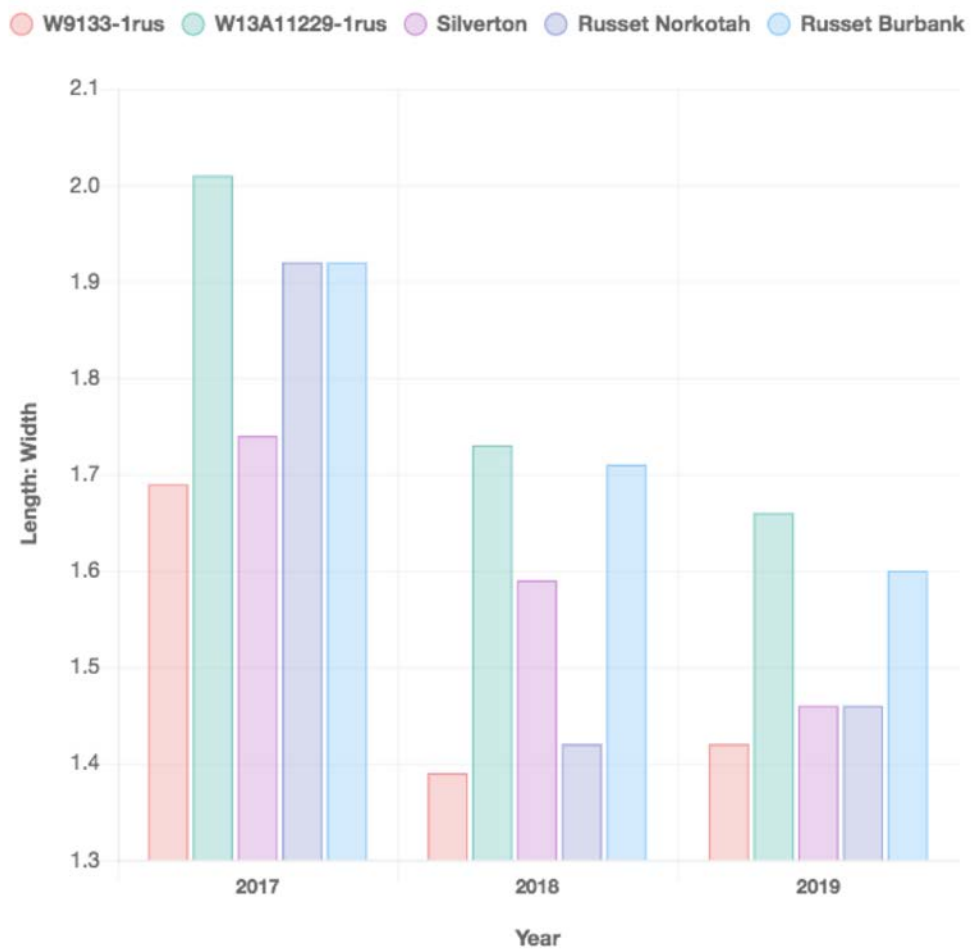
# Summary

- High yielding
- Large size profile, similar to Silverton & W9133-1rus
- Attractive tubers with light russeting
  - L/W ratio similar to Burbank
- Long dormancy, between Silverton and Burbank
- High specific gravity, between Burbank and Ranger
- Low glucose levels, light fry color

# Total Yield (cwt/a)



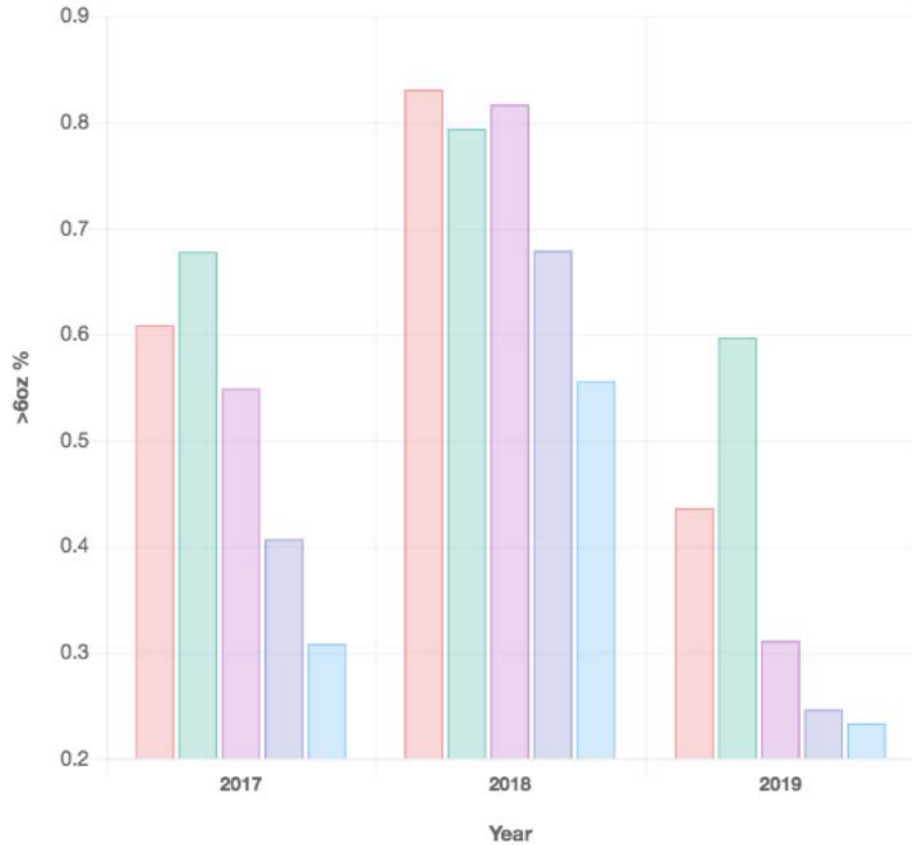
# L/W Ratio



@ Hancock

# Yield Fraction > 6 oz.

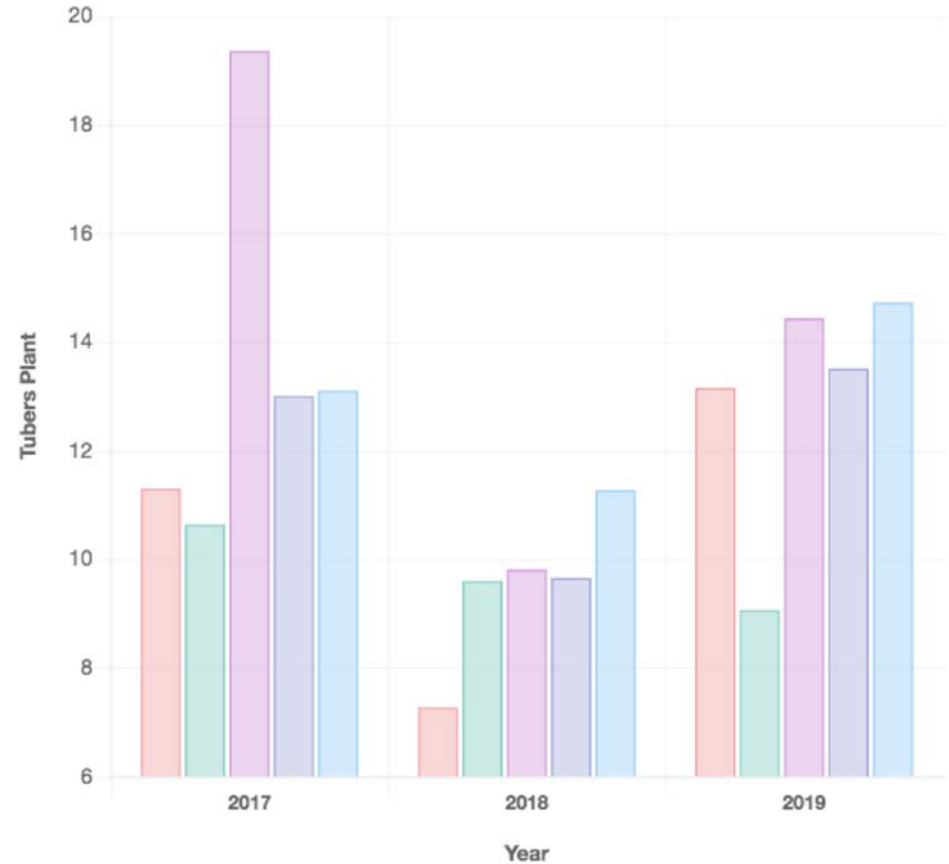
● W9133-1rus 
 ● W13A11229-1rus 
 ● Silverton 
 ● Russet Norkotah 
 ● Russet Burbank



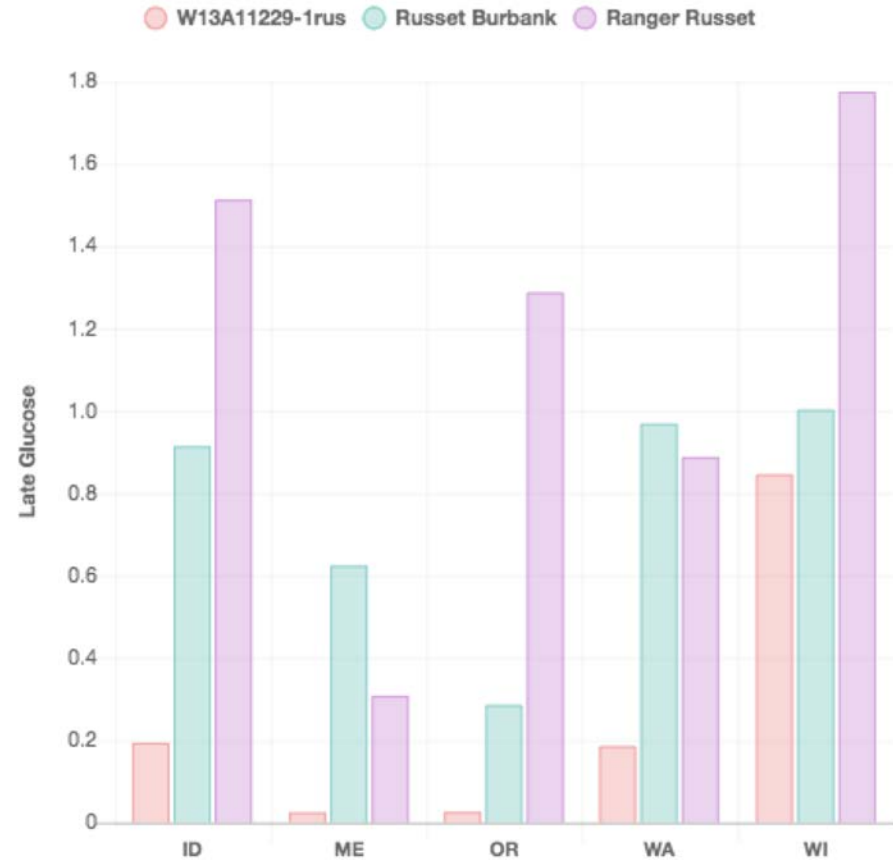
@ Hancock

# Tuber Set

● W9133-1rus 
 ● W13A11229-1rus 
 ● Silverton 
 ● Russet Norkotah 
 ● Russet Burbank

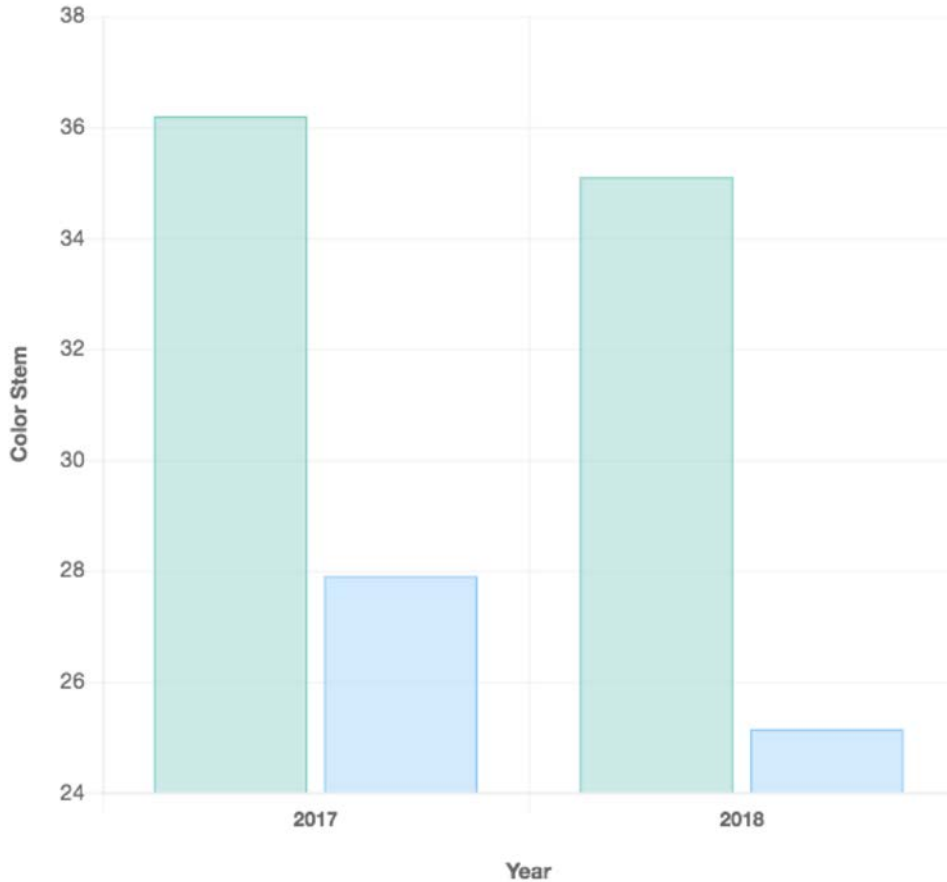


# 2018 National Fry Processing Trial



# Fry Quality @ Hancock Photovolt Stem End

● W9199-1rus 
 ● W13A11229-1rus 
 ● Silvertop 
 ● Russet Norkotah 
 ● Russet Burbank



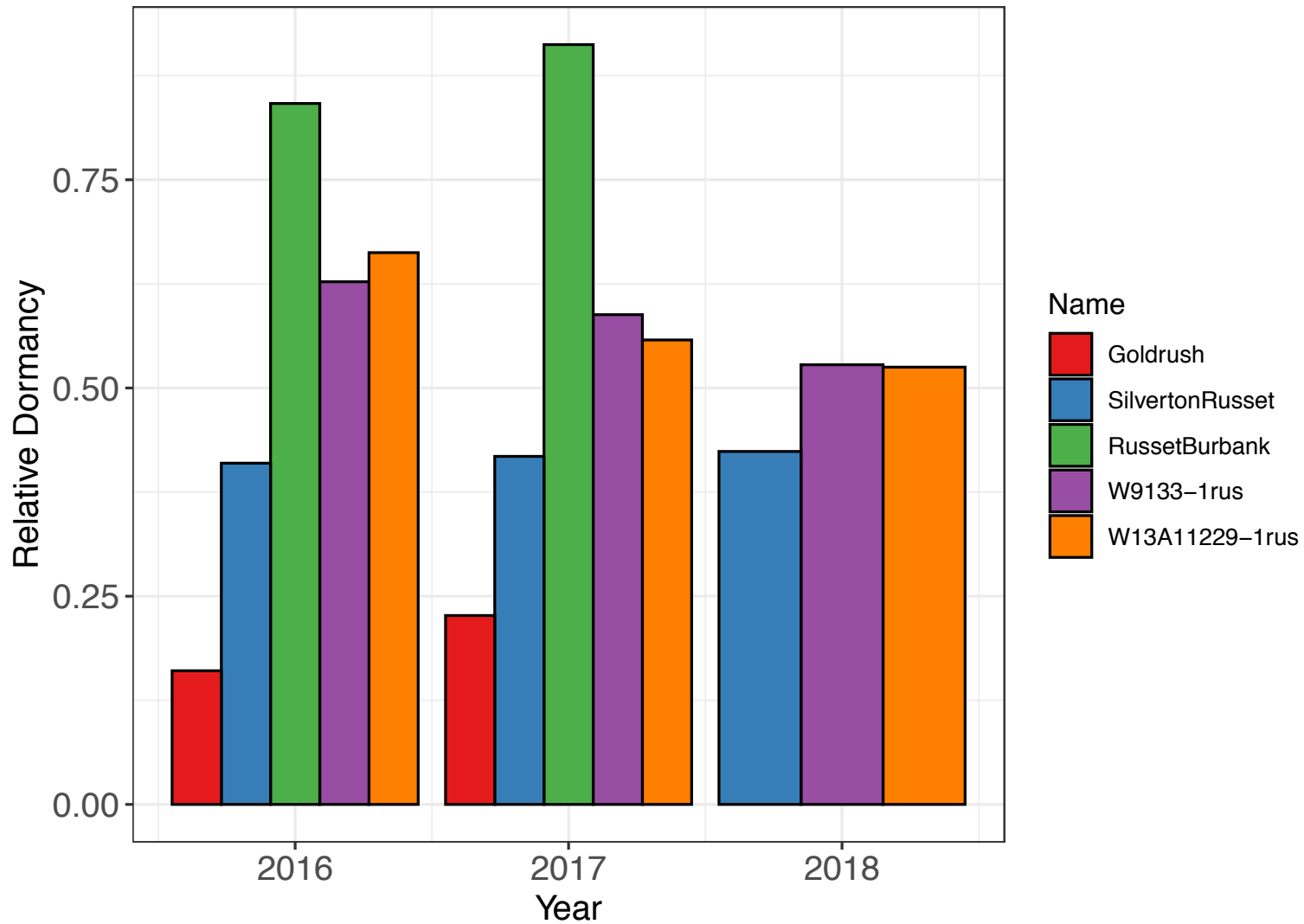
W13A11229-1rus



Russet Burbank



## Dormancy at 55°F (No CIPC, @ Rhinelander)





# 2020 Seed Status

- Harvested 300 lbs from 96 plants @ RARS
  - 40 lbs sent for Seed Certification winter test
- Nominating for NFPT Tier 2 (60 lbs)
- Plant back 100 lbs @ RARS
- Remainder (100 lbs) available for other public and private trials
  
- Established in tissue culture, completed one round of anti-viral treatment
  - Tested for PVY, PVS, PSTVd; results were negative