

Breeding Program Russet Summary

Oct 25, 2022

Trial description

- Hancock Research Station
- 15 seeds per plot, 11-12" spacing
- Vine kill 105-115 DAP

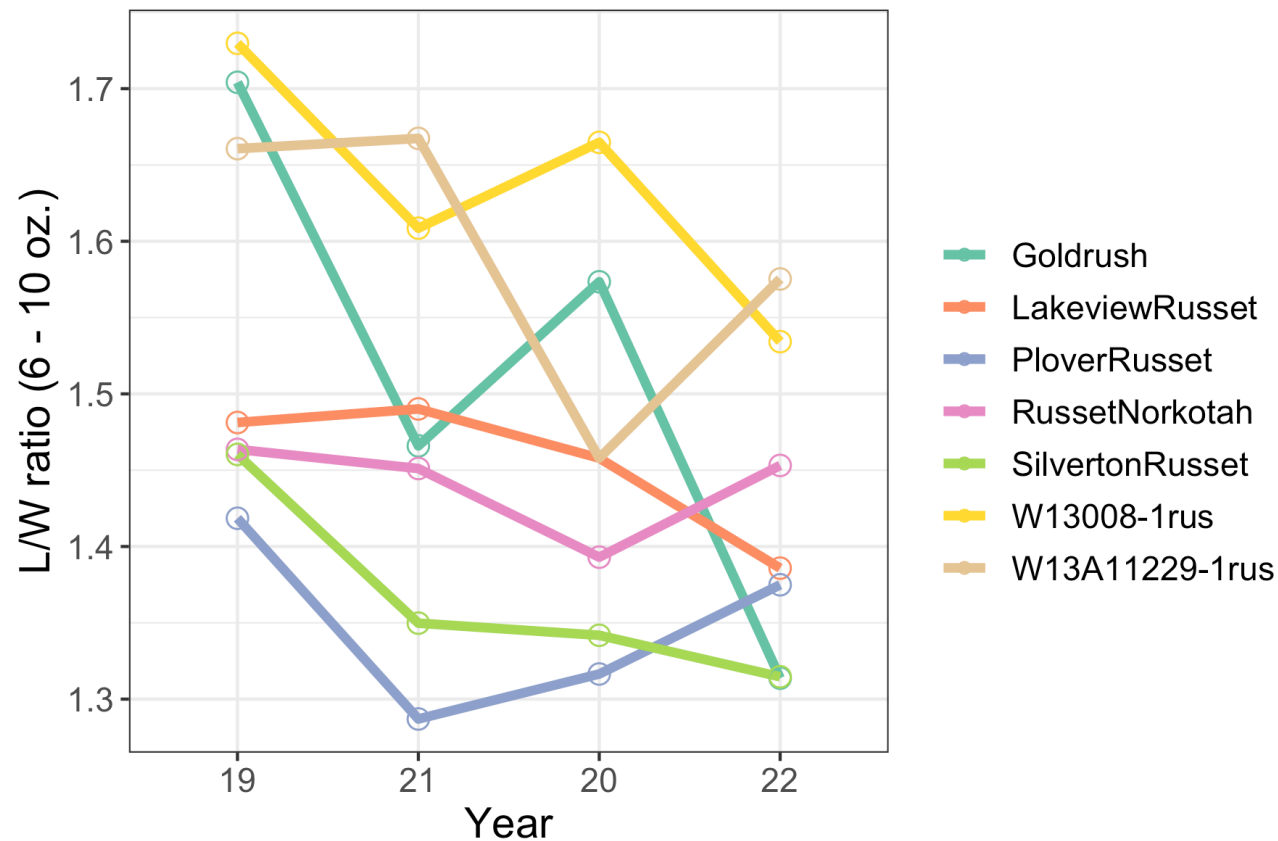
W13A11229



W13008

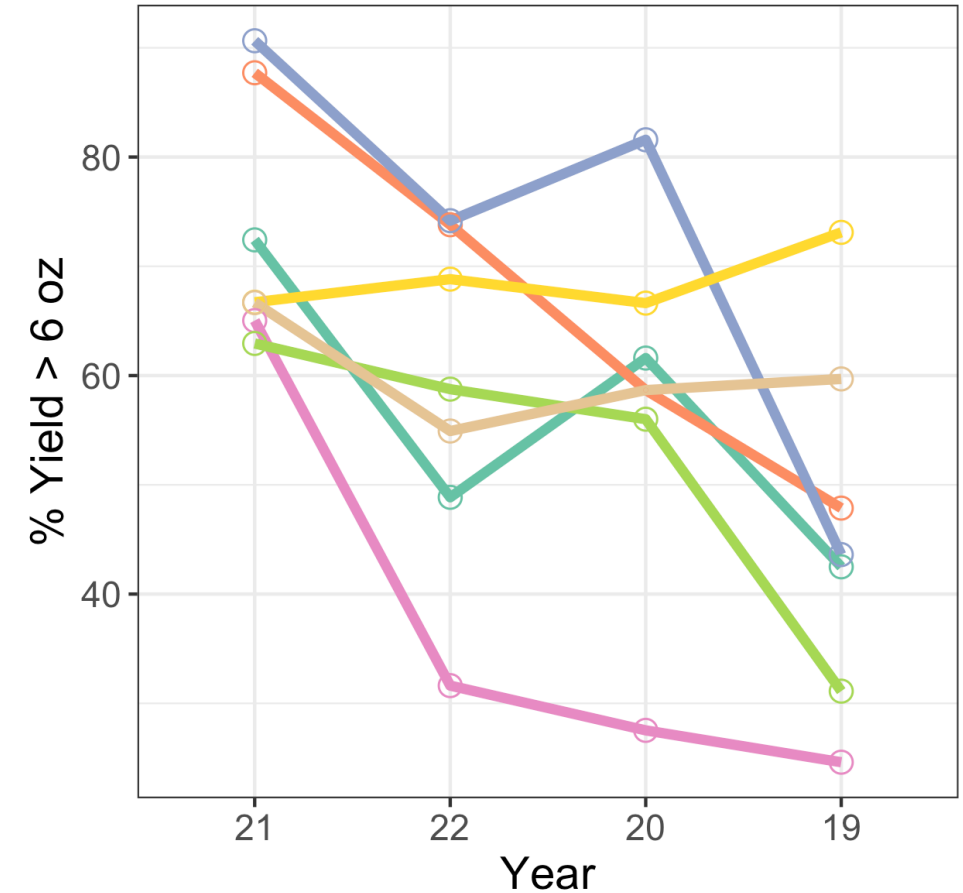
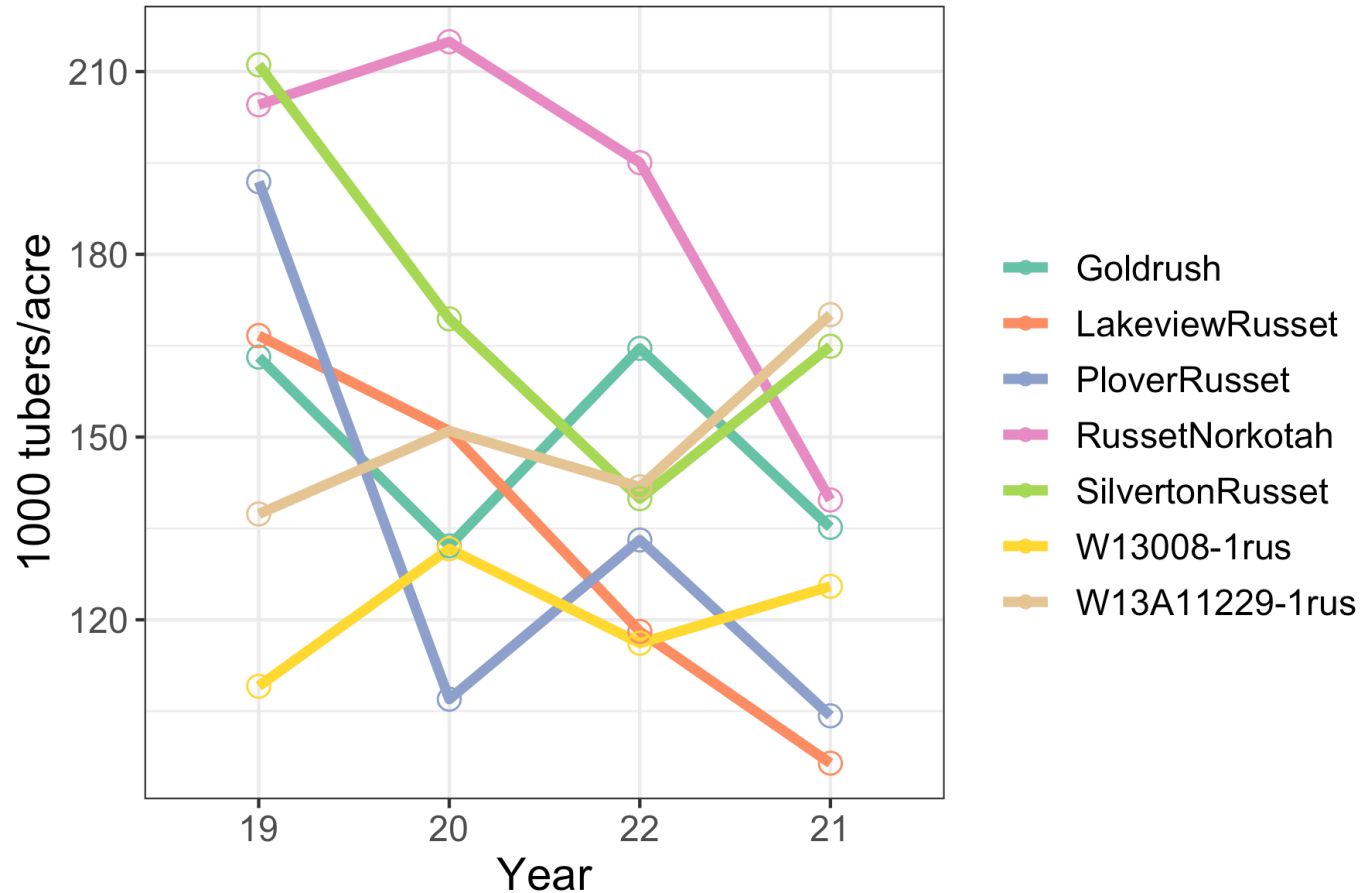


Tuber Shape



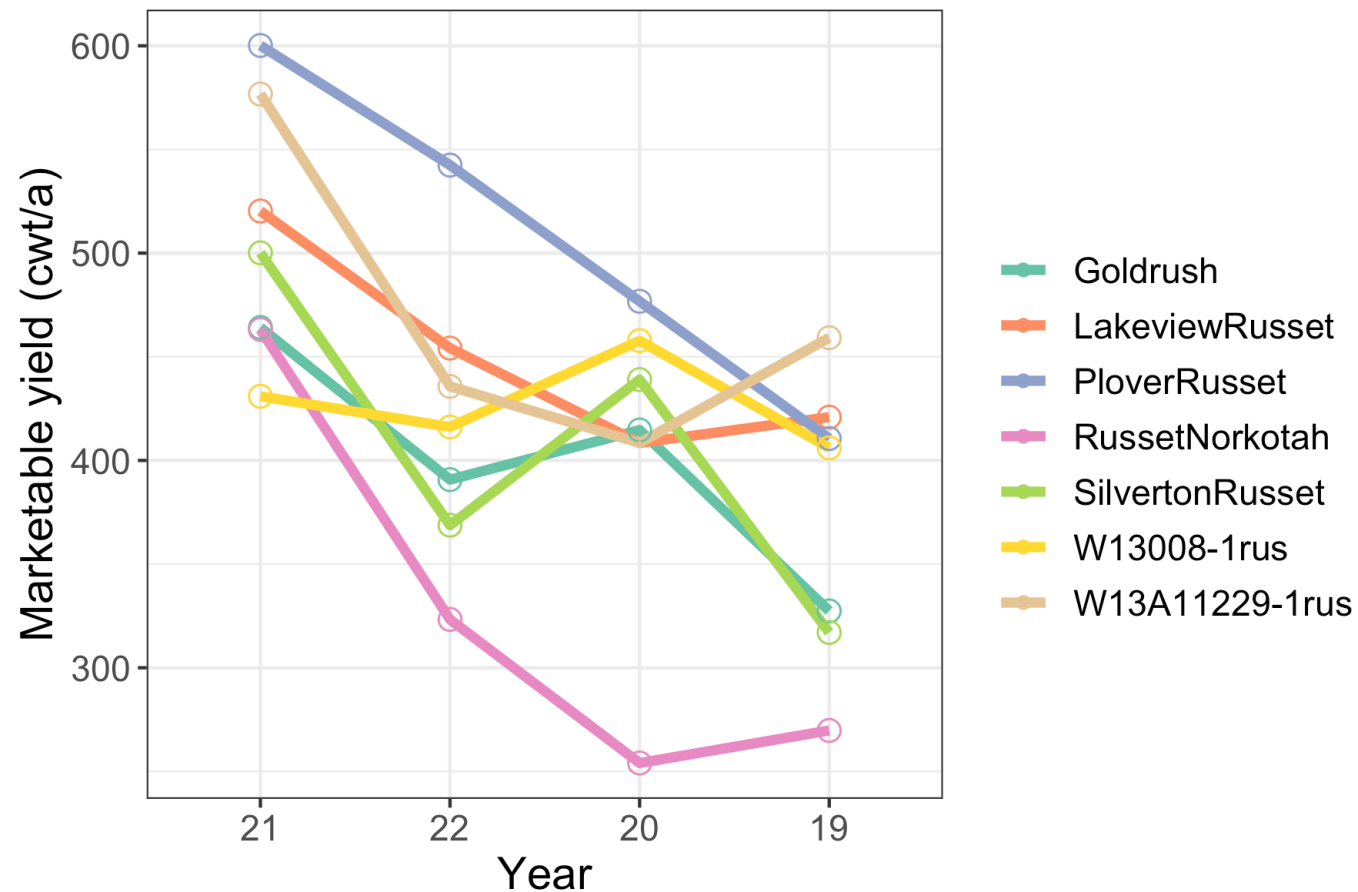
W13008 and W13A11229 were longest
 Plover and Silverton were shortest

Tuber Set and Size



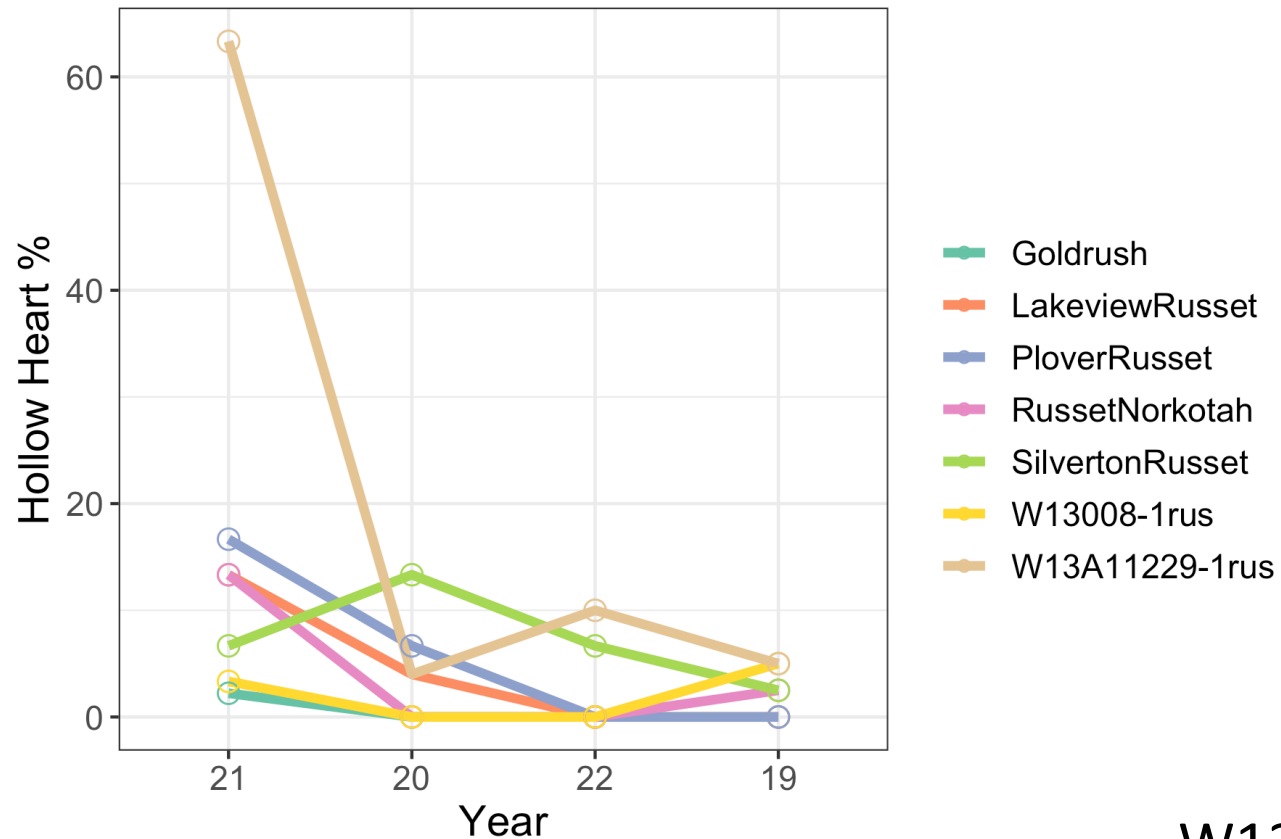
W13008 was most similar to Lakeview and Plover
 W13A11229 was most similar to Goldrush

Marketable Yield



- Plover was highest, Norkotah was lowest.
- Other clones were similar

Hollow Heart



W13008 has excellent resistance to HH
W13A11229 has some susceptibility

W13A11229-1rus

Great shape and appearance in the National Fry Processing Trial (NFPT)

2018



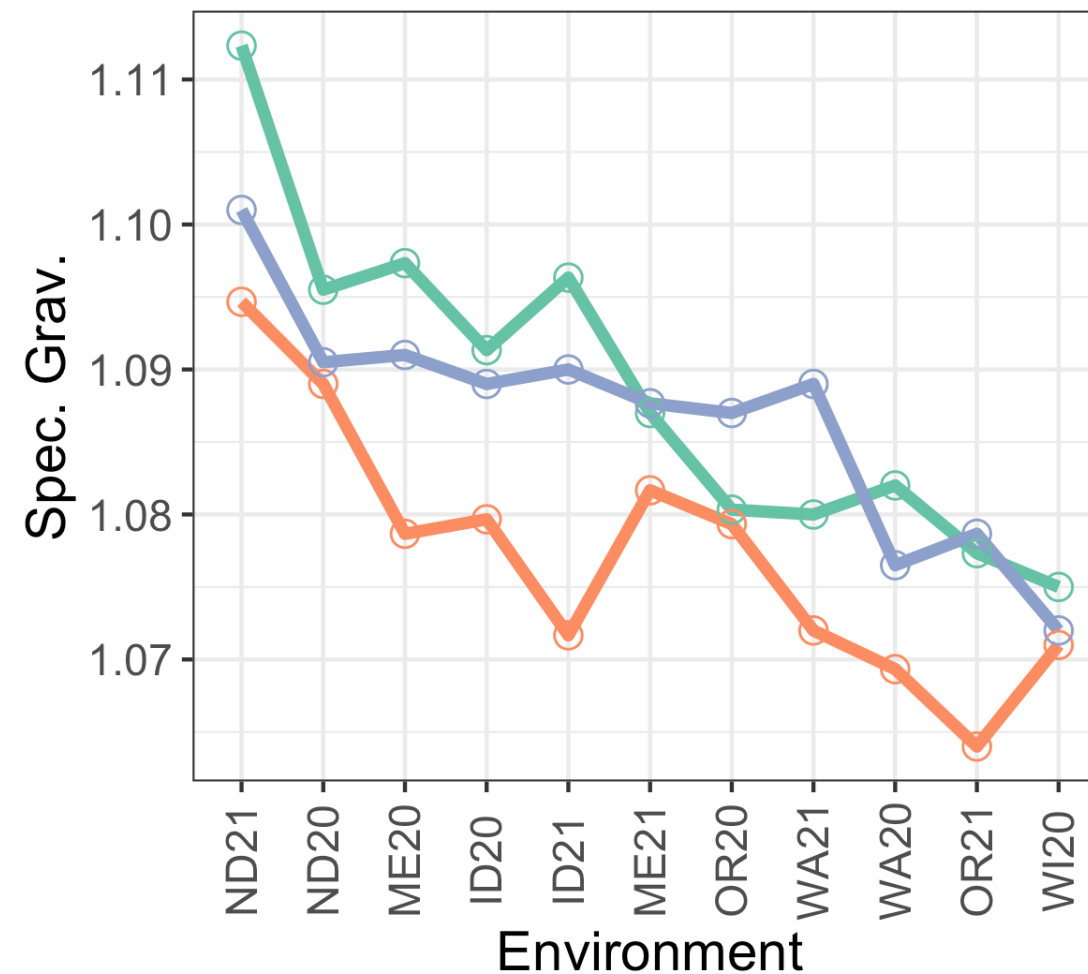
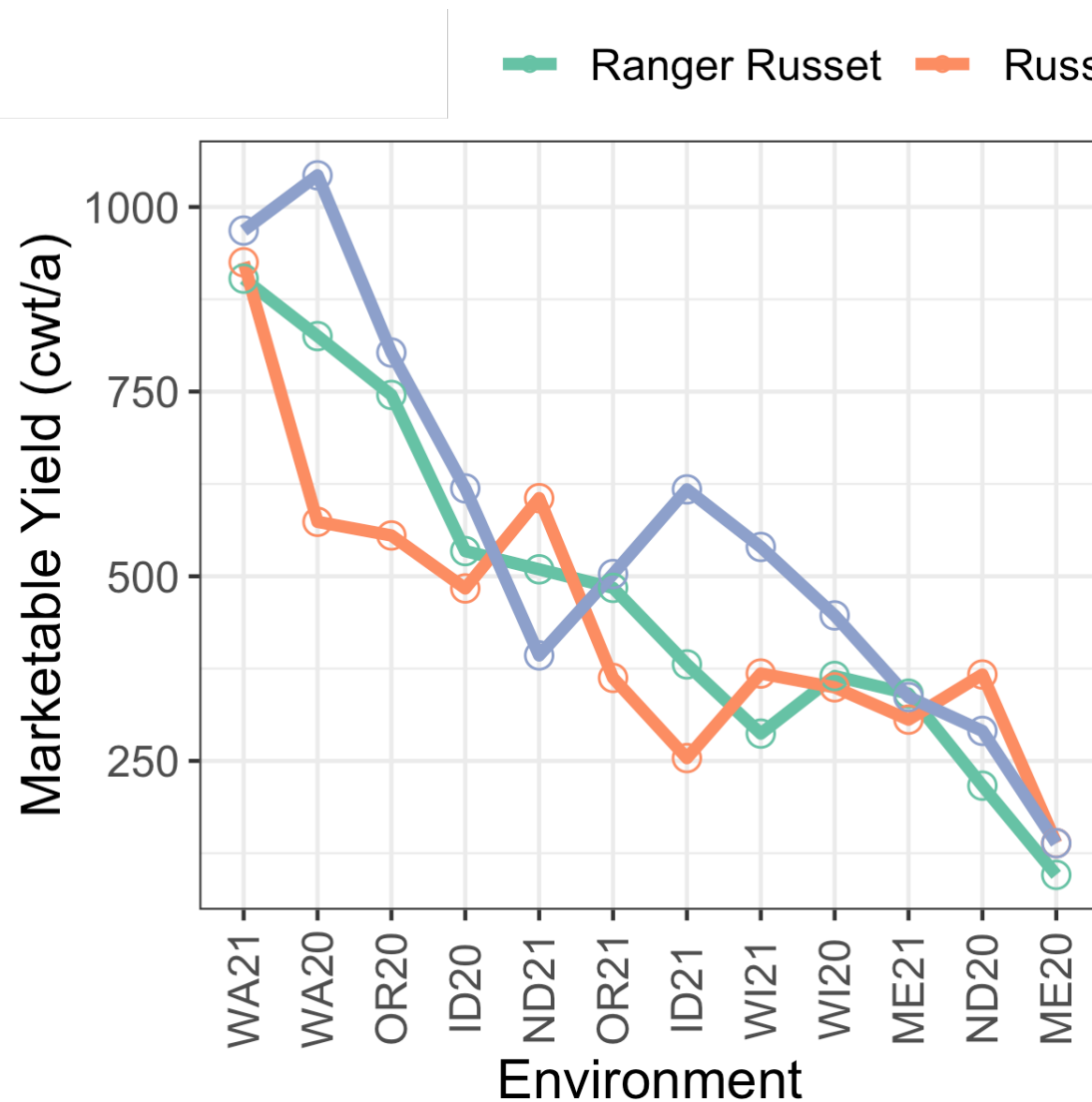
2020



2021



- Frequently outyielded the checks
- Spec. gravity consistently higher than Burbank



- Lower reducing sugars than checks
- Fry appearance and texture comparable to checks

